

Litepanels Brick Bi-Color

Brick One Light Kit
910-0001

Brick Bi-Color
915-1003

A compact and powerful variable color LED light that can withstand the elements

The Litepanels Brick builds on the legacy of the original MiniPlus which revolutionized the lighting industry. Now more robust, Bi-Color and IP-65 rated, the Brick is a perfect on and off camera solution for shooters on the go or who need light during wet conditions.

Following the Litepanels familiar rectangular form factor, the Brick is designed with select premium quality, high CRI, surface mount LEDs and paired with custom designed TIR optics. These tightly binned LEDs and fine-tuned optics provide the Brick with superior color reproduction and a light output that is up to four times brighter than the original MiniPlus. This higher intensity results in a longer throw and illuminates a wider area, allowing the Brick to compete with strong exterior light sources or illuminate a larger area effectively. The Brick is available as a single unit or as a light kit with accessories and protective waterproof case for safe transport or separately.

ADVANTAGES

- Output is up to 4X brighter than the original MiniPlus
 - High performance LEDs with custom paired optics
 - Higher intensity = Longer throw
- Superior color reproduction
 - High color rendition (CRI) Daylight 95 / Tungsten 98
 - Adjustable (Daylight to Tungsten), accurate color temperatures
- Rugged aluminium chassis design
 - Passive cooling
 - Efficient thermal management
- Ultra-smooth dimming from 100% to 0
 - No noticeable color shift throughout the entire range
- Flicker-free at any frame rate or shutter angle
- Dedicated on/off power switch
- (3) 1/4-20 mounting posts for a variety of mounting positions
- IP 65 rated
 - Dust Tight
 - Withstands water projected from any direction
- Integrated P-Tap cable
- AC or DC powering option



BRICK ONE LIGHT KIT SPECS

Size: 15x12.1x6.9" (37.9x30.8x17.5cm) (LxWxH)

Weight: 8.5lbs/ 3.9kgs

Case: Seahorse SE520

Features: Watertight, crush resistant, Built-in padlock holes

BRICK ONE LIGHT KIT INCLUDES:

- Half White Diffusion Gel
- Manfrotto 244 Micro Articulating Arm
- International AC Power Supply (900-1501)
- 60° Honeycomb Frame (900-1504)
- Soft Diffusion Frame (900-1505)
- Waterproof Hard Case with Custom Foam
- TVMP Stand Adapter with T-handle (900-6105)



BRICK SPECS

Color Temperature: Tungsten-Daylight

Size: 8 x 2.4 x 2.8" / 20 x 6.1 x 7.1cm

Weight: 1.5 lbs. / .68kg

Power Requirements: 12-17V DC

Maximum Power Draw: 19W

International AC Power Supply: 100-240 VAC

Integrated P-Tap Cable Length: 3ft/0.9M

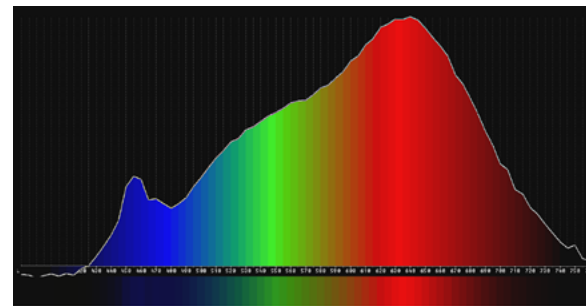
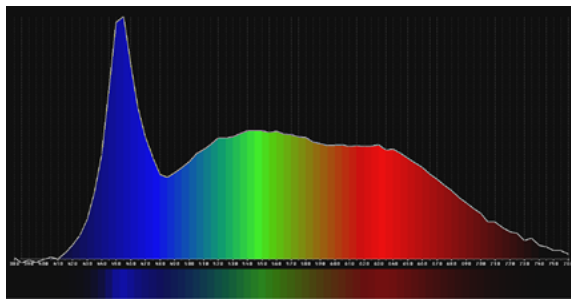
Protection: IP65

Litepanels Brick Bi-Color

PHOTOMETRICS - Beam Angle 36°

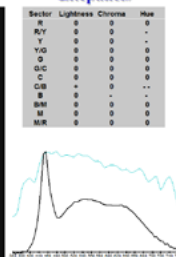
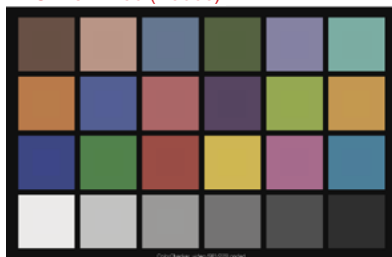
DAYLIGHT	Footcandles	LUX
5 ft / 1.5 m	98	1060
10 ft / 3 m	24	255
15 ft / 4.6 m	11	115

TUNGSTEN	Footcandles	LUX
5 ft / 1.5 m	81	870
10 ft / 3 m	19	200
15 ft / 4.6 m	9	100



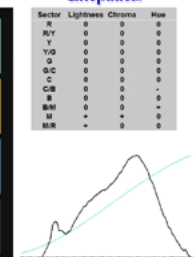
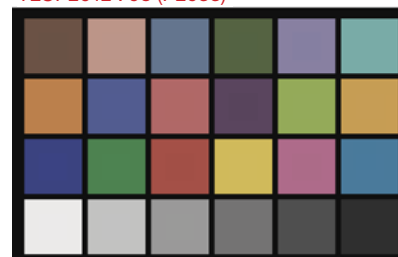
Brick Bi-Color (Daylight): CCT = D5853 (-1.0)
TLCI-2012 : 95 (D5853)

EBU : TLCI-2012
Litepanels



Brick Bi-Color (Tungsten): CCT = P2933 (+0.7)
TLCI-2012 : 98 (P2933)

EBU : TLCI-2012
Litepanels



OPTIONAL ACCESSORIES



Anton/Bauer QRG-LG
Gold Mount Stand Mount
(8375-0176)



PowerTap Extension
(8075-0010)



The Litepanels Difference

Full spectrum quality soft light, with visually accurate color temperature
 The widest variety of LED fixtures available, with flexible AC or DC power options
 Smooth dimming from 100% to 0, with no noticeable color shift
 Flicker-free performance at any frame rate or shutter angle
 Controlled current and thermal management for long LED life
 Efficient power management delivers low power consumption and enhanced reliability
 Engineered and designed in Los Angeles, CA



Litepanels, a Vitec Group brand, was founded in 2001 by five professional gaffers and engineers who saw the future and pioneered LED (light emitting diode) lighting for motion pictures, television, and the audio-visual industry. Their Emmy® award-winning technology has now been used on thousands of productions worldwide and is trusted by the world's leading broadcast organizations. Litepanels continues to

expand its suite of flicker-free, color accurate, fully-dimmable soft lights that talent and lighting directors admire. These environmentally friendly fixtures can pay for themselves with power savings and long life, setting a new standard in professional lighting.