



## PROFESSIONAL LIGHTING ON THE FLY

**Broadcast quality lighting wherever you need it. Fast to set up, fits anywhere.** The lightweight, compact Lykos+ Bi-color LED panel is one of the smallest in the Litepanels range but delivers an impressive 2000 lux (@3ft/1m) of accurate white light at any color temperature from 3200-5600K in an instant.



**40% BRIGHTER**  
Than the original Lykos

- **Light anywhere** - Lightweight, slim design with a handle
- **Over 2,000 lux at 3ft/1m at 5600K**
- **Astra LED and Lens technology** for ultimate optical efficiency
- **TLCI / CRI 96 color accuracy**
- **3200K - 5600K adjustable color temperature**
- **Precision color temperature and brightness dials at your fingertips**
- **100-0% flicker-free adjustable brightness**
- **Optional Lykos Bluetooth Dongle (908-0001) supported for control via iOS device**
- **L-Series battery mount**



Optional flight kit

## Go everywhere fit anywhere

Expand your creative options with a brighter mini panel. Weighing in at just 1lb (0.5kg), adding quality white light to your set has never been easier. Lykos<sup>+</sup> is the perfect light for remote locations or tight spaces, its compact size fits into any scene and with over two hours of battery operation it won't leave you in the dark. With robust travel kits including, lights, stands and flight case, your Lykos<sup>+</sup> lighting can go anywhere you need it.

### Setup in seconds

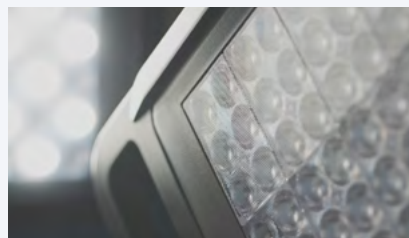
Hand-held, stand mounted, taped, or tied, Lykos<sup>+</sup> is ready to light your scene in an instant. With multiple mounting options and a chunky hand grip, Lykos<sup>+</sup> is always perfectly positioned and with brightness and color temperature controlled by two simple dials, or via iOS app with the optional Bluetooth dongle, light output is always on point.

### Brighter light, perfect white

Your subject will always be in their best light. With an outstanding CRI of 96, Lykos<sup>+</sup> delivers 2,000 lux (@3ft/1m) of ultra-bright, energy-efficient, and consistently color accurate white light. Powerful Astra technology LEDs and lensing create broadcast quality flicker-free lighting in compact form. Dial in the perfect CCT for your scene from 3200 – 5600 with no color variation when dimming from 100% to 0%

### Rugged and Reliable

Rugged and strong to provide reliable lighting support even on the toughest assignments, Lykos<sup>+</sup> is built to broadcast quality standards. With tough Peli case kits for safe transport, support from authorised service centers around the world and multiple power options including onboard L-Series batteries and P-Tap, Lykos<sup>+</sup> won't let you down in the field.



### Optical

**Beam angle:** 50  
**Color temperature:** Bi-color  
**CCT Range:** 3200-5600  
**Daylight (5600K):** 2148 Lux @3ft/1m  
**Tungsten (3200K):** 1908 Lux @3ft/1m  
**CRI (average):** 96  
**TLCI:** 96  
**Optics:** Flood - Precision custom TIR lens  
**Gel:** Diffusion gel included

### Operational

- **CCT control:** Daylight/Tungsten % dial with readout on LCD panel
- **Dimming control:** 0-100% dial with intensity readout on LCD panel
- **Remote control:** Bluetooth Module [not included]
- **Ambient operating temperature:** 14-122°F/-10-50°C
- **Estimated LED lifetime:** 50,000+ hrs

### Mechanical

- **Weight:** 1lb/500g
- **Height:** 10.2"/260 mm
- **Width:** 6"/152 mm
- **Depth:** 1.7"/42 mm
- **Mounting method:** Cold shoe/female 1/4"

### Electrical

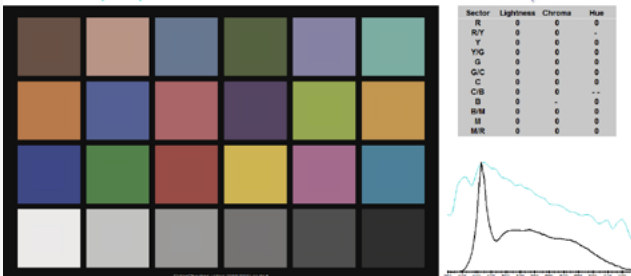
- **Nominal power draw:** 23W
- **Power supply:** AC Adapter (9V DC)
- **IP Rating:** IP20
- **Mobile power options:**
  - Anton/Bauer 7.2V NPF [not included]
  - Sony L [not included]
  - D-Tap Cable [not included]
  - QRC Plate for 14.4V [not included]

## PHOTOMETRICS

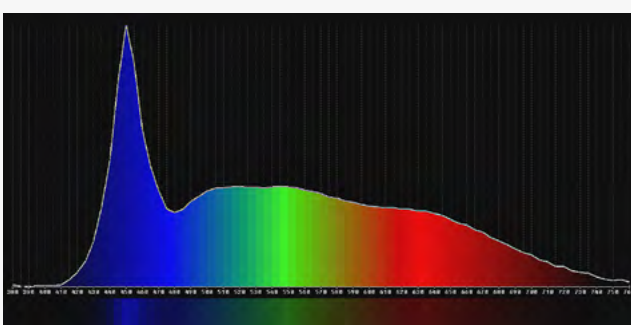
DAYLIGHT	Footcandles	LUX
3.3ft / 1m	197	2148
10ft / 3m	22.4	238.7
16ft / 5m	8	85.9

TUNGSTEN	Footcandles	LUX
3.3ft / 1m	175	1908
10ft / 3m	19.9	212
16ft / 5m	7.1	76.3

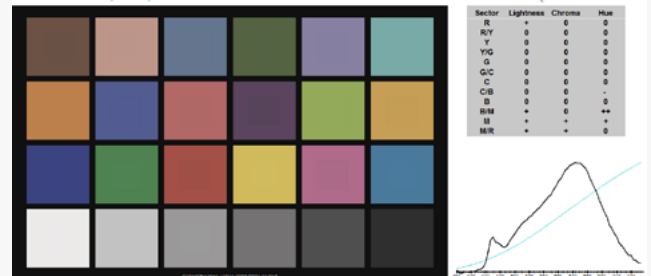
Lykos+ Daylight: CCT = D7927 ( -0.9 )  
 TLCI-2012 : 97 (D7927)



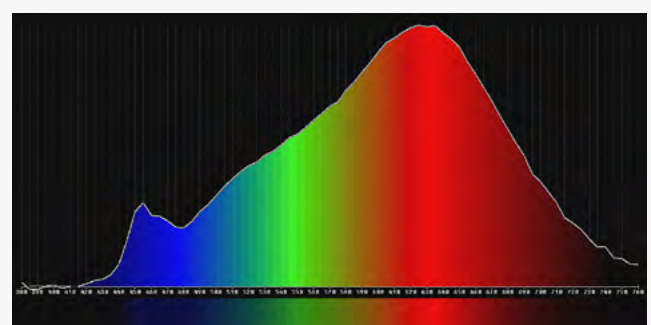
Television Lighting Consistency Index-2012



Lykos+ Tungsten: CCT = P2777 ( +0.5 )  
 TLCI-2012 : 95 (P2777)



Television Lighting Consistency Index-2012





935-3190

Litepanels Lykos+ Bi Color



935-3191

Litepanels Lykos+ BiColor Flight Kit



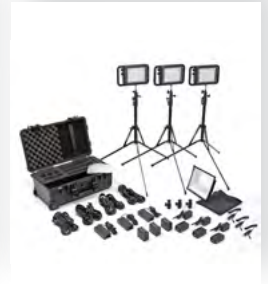
935-3192

Litepanels Lykos+ BiColor Flight Kit with Battery Bundle US



935-3193

Litepanels Lykos+ BiColor Flight Kit with Battery Bundle UK



935-3194

Litepanels Lykos+ BiColor Flight Kit with Battery Bundle EU



935-3195

Litepanels Lykos+ BiColor Soft Box



900-3100

Flight Case Lykos BiColor Trio Pelican w/cut foam



900-3009

Nano Stand



900-6105

TVMP Stand Adapter with T-Handle for Deluxe Ball Head Shoe Mount



900-0004

Base Plate with Deluxe Ball Head Shoe Mount



900-6104

D-Tap Power Cable



908-0001

Bluetooth Dongle



8375-0176

QRC-LG: Light stand battery plate with Gold Mount



8375-0215

QRC-LG V-Mount: Light stand battery plate with Gold Mount



The pioneering force that introduced LED panel lighting to the television and motion picture industries. Three time Emmy award winner.

For 20 years Litepanels has developed ever-more innovative lighting solutions including on-camera lights, Fresnels, multi-color special effects

lighting and wireless control systems to deliver the industry's most accurate, adaptable and agile LED lighting range for studios, movie sets or on location.

With a wide range of creative light shaping tools and accessories, Litepanels has the perfect solution to show your subject in the best light.